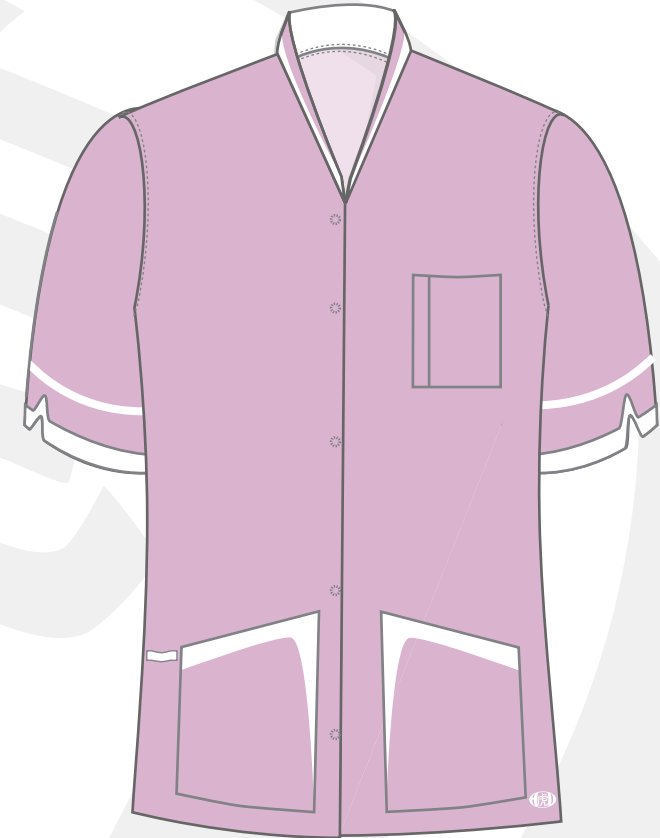


tunic standard size chart

Order Size	8	10	12	14	16	
Bust	cm	79 - 83	84 - 87	88 - 91	92 - 96	97 - 101
	ins	31 - 32.5	33 - 34	34.5 - 36	36 - 38	38 - 40
Waist	cm	61 - 65	66 - 69	70 - 73	74 - 78	79 - 83
	ins	24 - 25.5	26 - 27	27.5 - 29	29 - 30.5	31 - 32.5
Hips	cm	84 - 88	89 - 92	93 - 96	97 - 101	102 - 106
	ins	33 - 34.5	35 - 36	36.5 - 38	38 - 40	40 - 42
Order Size	18	20	22	24	26	
Bust	cm	102 - 106	107 - 111	112 - 117	118 - 123	124 - 129
	ins	40 - 42	42 - 43.5	44 - 46	46.5 - 48.5	49 - 51
Waist	cm	84 - 88	89 - 93	94 - 99	100 - 105	106 - 111
	ins	33 - 34.5	35 - 36.5	37 - 39	39.5 - 41	42 - 43.5
Hips	cm	107 - 111	112 - 117	118 - 123	124 - 129	130 - 135
	ins	42 - 43.5	44 - 46	46.5 - 48.5	49 - 51	51 - 53



The sizes above are approximate, please use as a guide only.

Please note: the measurements above are the measurements of the garment, not the wearer!

Conversion from centimeters to inches is approximate. Please also note that if a garment is listed as "slim fit" or "fitted" it will be about a size smaller than the normal equivalent.

Hu Cares Workwear

