

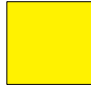


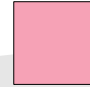







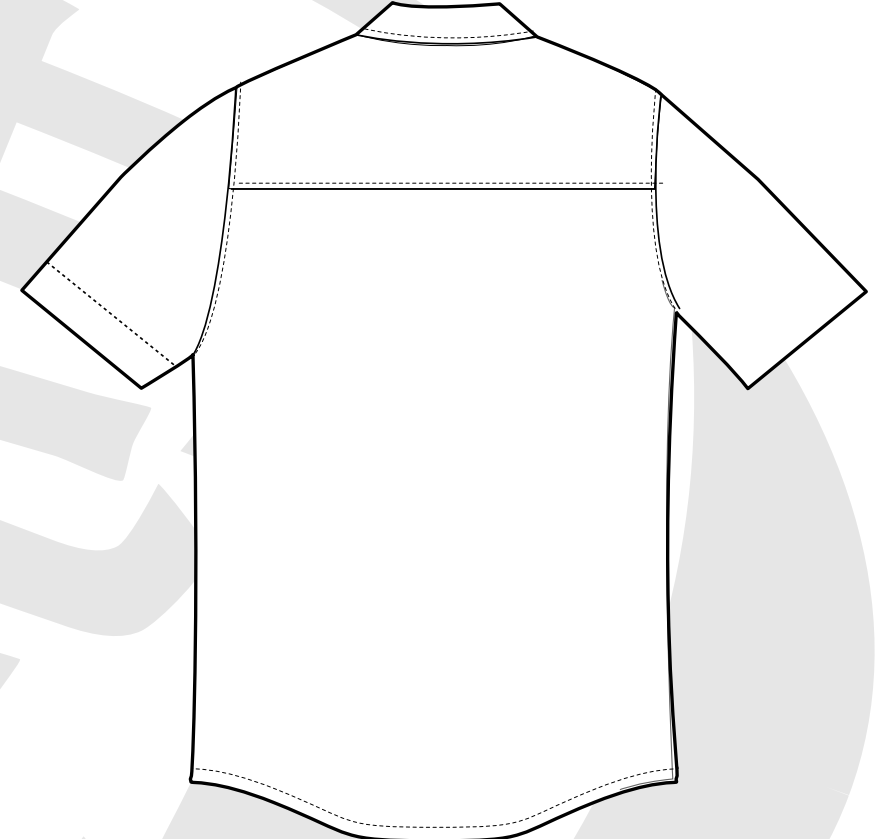


Hu Kit Standard Colours:

Red	Orange	Yellow	Light Blue	Dark Blue	Pink	Green	Purple	Brown	Grey	Black	Khaki	Stone
												
Pantone (solid uncoated) Warm Red	Orange 021	Process Yellow	Process Blue	Reflex Blue	197 U	363	525	126	Cool Grey 7	Black	5835	7497

front

back



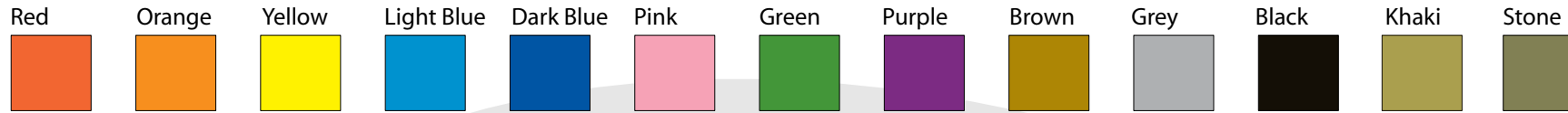
Right Upper
Sleeve
Detailed View

Left Upper
Sleeve
Detailed View

work shirt (short sleeve)



Hu Kit Standard Colours:



Pantone (solid uncoated)
Warm Red Orange 021 Process Yellow Process Blue Reflex Blue 197 U 363 525 126 Cool Grey 7 Black 5835 7497

front

back



Right Upper Sleeve Detailed View

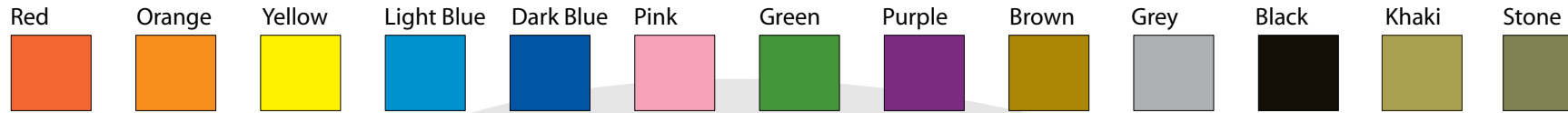


Left Upper Sleeve Detailed View

work shirt (long sleeve)



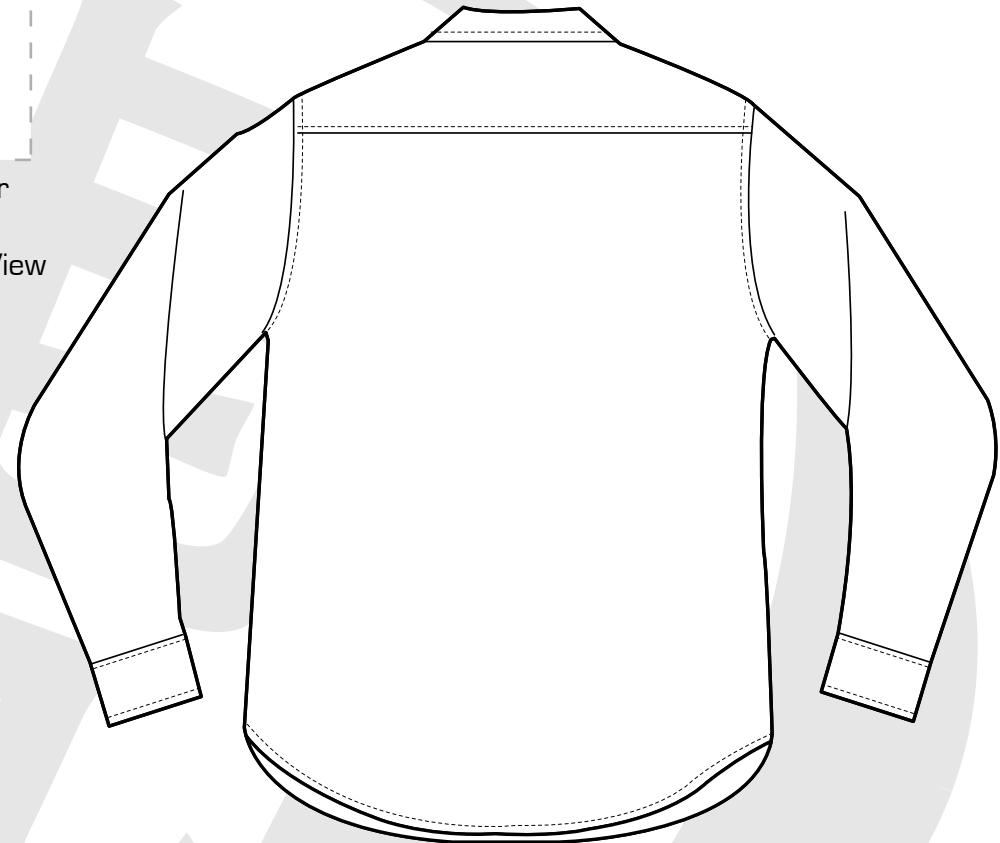
Hu Kit Standard Colours:



Pantone (solid uncoated)
Warm Red Orange 021 Process Yellow Process Blue Reflex Blue 197 U 363 525 126 Cool Grey 7 Black 5835 7497

front

back



Right Upper Sleeve Detailed View



Left Upper Sleeve Detailed View

Please note:
All fixings are 'popppers'
for quick removal in an
emergency.

welding shirt (long sleeve)

